

Enterprise Mobility



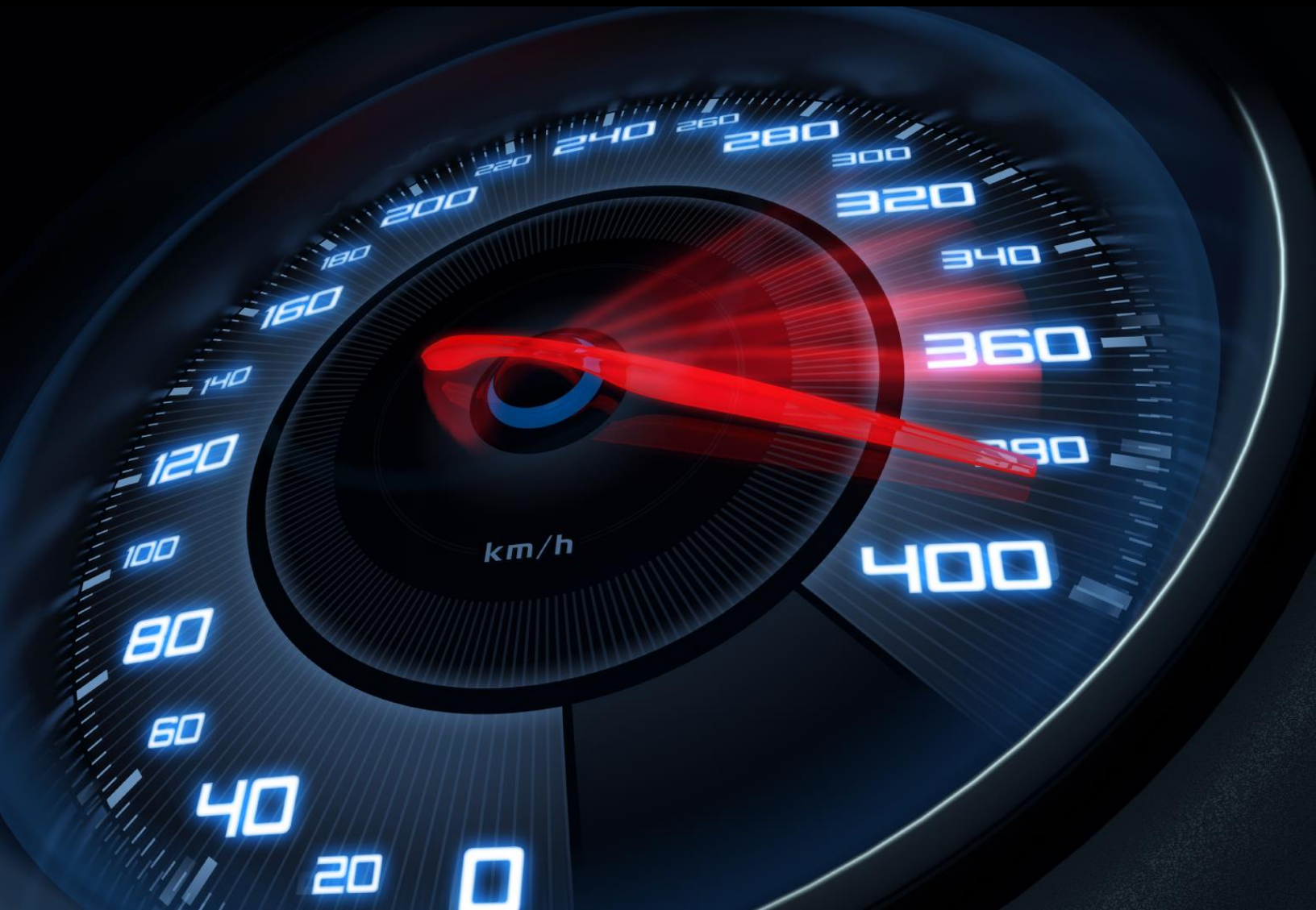
"Secure insight, anytime, anywhere."



THE MOBILE PARADIGM

Mobile technology is revolutionizing the way information is accessed, distributed and consumed. This 5th way of computing will dwarf all others by combining information and business into an always on, ready, and connected device. Today's mobile devices are comprised of powerful Smartphones and tablet PCs that are comparable to today's laptops and desktops with features that cannot be found in either. Mobile is the only type of device that is continually integrated with existing and emerging technologies such as: barcode scanning, multi-touch gestures, geo-location and sensory applications, data capturing and speech recognition. This presents a unique opportunity for organizations to stay ahead of the technology curve and embrace the consumerization of IT and bring-your-own-device (BYOD) by supporting this new mobile business paradigm and their applications. Information and resources will be delivered to everyone, anywhere, anytime, independent of device and architecture. Mobile computing is changing the way businesses and people operate by setting the standard for enterprise connectivity. Those who embrace mobile computing will wonder how they ever did business without it.

Mobile is empowering organizations and their employee's with Business Intelligence (BI) applications and Enterprise Mobile Applications (EMAs) that will synchronize and streamline business processes while providing up-to-the-minute tools and information. Organizations can automate business processes and experience increased competitiveness and growth by empowering their employees with real time updates of prospects, leads and opportunities. Employees will be able to provide immediate feedback of outcomes, experience increased productivity from working at anytime, regardless of location and deliver on-demand insights for client satisfaction. Together, organizations and employees can experience increased win rates, efficiency, productivity and opportunity. Scalable Systems Enterprise Mobility Solution is designed as a new breed of business intelligence that combines analysis, information, applications, collaboration and transactions into a single unified source for increased profitability.

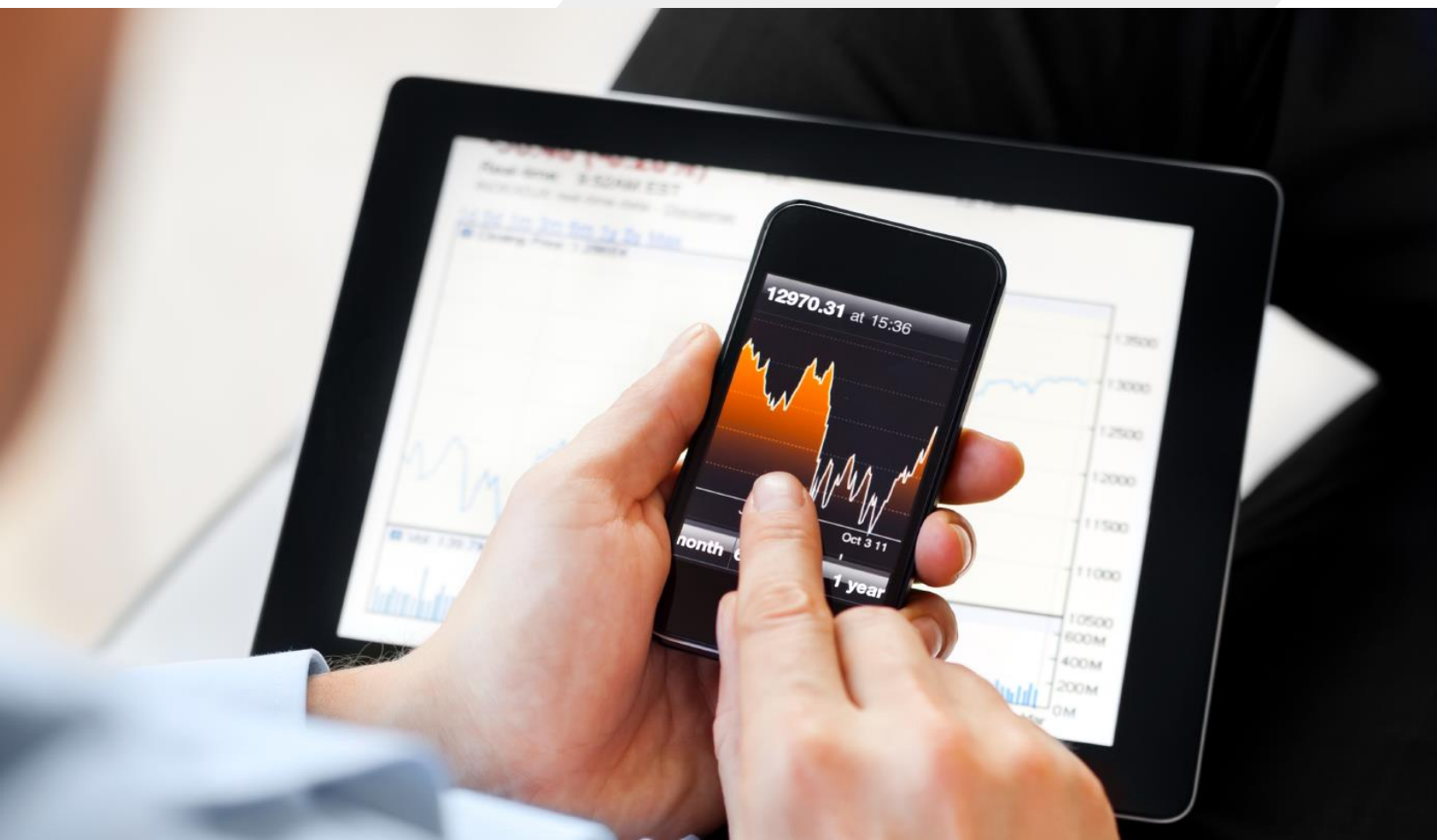


MOBILE BUSINESS INTELLIGENCE APPLICATIONS

With increased market competition and growing client demands, organizations are struggling to meet client and shareholder expectations. Moreover, organizations are looking for innovating ways to increase productivity, efficiency, sales performance, win rates and market competitiveness while supporting their growing mobile workforce. Business Intelligence (BI) users need to have access to enterprise resources for immediate insight-to-answer, reduced time-to-sale, prospect awareness and enhanced decision making capabilities. With mobile BI applications, employees can perform business transactions and analysis on the go, have increased agility and performance from being able to work from any location, and respond immediately to client demands and changes without having to return to the office. With direct read and write access to information systems, organizations can better forecast sales figures, monitor and track performance and keep their mobile workforce informed with the latest developments. BI applications are leading to more successful decisions and capturing of what were once missed opportunities.

ENTERPRISE MOBILE APPLICATIONS (EMAs)

EMAs represent the next generation tool for organizations looking to streamline business process, empower employees, and connect to customers and partners. EMAs are more flexible in that they can be designed for any purpose, deployed internally or externally, run on a wide range of mobile devices and connect to disparate systems. Whether your intention is to develop EMAs for customers to peruse catalogs and place orders, automate field processes for employee activity or streamline business processes between partners and vendors, EMAs are your solution. With the consumerization of IT, bring-your-own-device and the new mobile business paradigm, EMAs are a complete solution that will increase productivity, efficiency and growth. Organizations can benefit from both worlds by moving increasingly closer to their consumer base by staying connect and relevant, as the same time empowering individual and departments with the access, tools and information necessary to-do their jobs more efficiently.



MOBILE APPLICATION DEVELOPMENT

Scalable Systems can design, develop and integrate disparate data sources, information system and tools under a single application using Apple's iOS, Google's Android and HTML5 platforms. EMAs can be developed per department, position or job function with tools and information designed around workflows. Functionality and access can be restricted to ensure organizational policy, compliance and privacy are enforced. Scalable Systems' EMAs and BI applications are not limited to BI users, internal or external deployment and can be used throughout your organization for increased efficiency and productivity. For organizations that are "testing the waters" of mobile applications, Scalable Systems offers full mobile development for the iTunes Store and Android Market place as well as free proof of concepts. At Scalable Systems we envision our mobile intelligence solutions as a way for organizations to morph into a singularity of growth and profitability by integrating EMAs and BI with existing business applications, systems, processes and people.

APPLE iOS

As the industry leader in mobile devices, Apple brings trusted and proven application development and design for mobile application users. Apple's mobile devices have set the standard for embed device integration, simplicity, speed and possess a battery life not found in any other device. With an unmatched user adoption rate, both BI and non-BI users alike will easily be able to extract meaning insight from data manipulation, perform business processes, update outcomes, and access the latest information needed to do their jobs. One of iOS's sufficient strength lies within its "sandboxed" memory architecture where applications, iOS system files, and kernel resources are isolated from "the user's application space". Apple devices also use hardware based AES 256-bit encryption making the device and its apps secure for any use.



GOOGLE'S ANDROID



The free and open source nature of Android's operating system make it obvious choice for those who want to explore the latest technology without having to conform to any standards. Android leverages the open source community to not only strengthen its existing technology, but to develop new features at a much faster rate than its competitors. Applications can be developed and fine tuned to a specific mobile device for unsurpassed performance and capability. Having the ability to choose from multiple handset and tablet manufacturers will allow for organizations to expand mobile applications to a wider user base as not every employee requires the same features or processing power. Android applications offer a faster time to market as applications do not have to adhere to a strict guidelines or approval processes.

HTML5

HTML5 mobile applications have been dubbed "The Hybrid Approach" for its cross-platform development and one app design method. HTML5 applications function just like those found on today's mobile devices but only have to be designed and development once, saving time, money and resources. The same code can be reused for virtually every platform leaving more time spent on customizing applications for a much large user base and automating business processes. Applications need only a mobile web browser that supports HTML5 to utilize today's standard of off-line/device storage, multi-touch gestures, and embedded device features and sensors. The most significant feature of HTML5 applications will be multimedia integration, where rich audio and visual effects can be displayed independent of the device's supported architecture.





MOBILE APPLICATION TESTING

For organizations who developed their own EMAs, BI and mobile applications, Scalable Systems offers extensive testing services to ensure your applications perform as designed. Application testing is a vital stage in the development life cycle and is required in order to deliver secure and bug free applications. Bugs can cause everything from unresponsive applications to end user rejection to vulnerabilities that can be exploited to gain unauthorized access to information and system resources. Proper testing is more than just reviewing lines of code, it requires pushing the application to its limits under real life conditions, such as: concurrent users, host OS and third party integration, load and performance times, carrier and device restrictions and unintended use. Utilizing our off shore center of excellence and global resources, Scalable Systems can provide low cost, high quality testing in the following areas:

FUNCTIONALITY: Find bugs by testing applications features in both intended and unintended ways. Evaluate host OS system calls from phone calls, text messages, alerts, and third party applications for interruption handling. Application-to-application interaction and device specific factors such as OS security, UI controls, data handling and error reporting.

SECURITY: Input validation, data and connection handling, potential effects of malware and targeted attacks, data storage, key management, available OS and third party security and third party application integration.

LOAD: Application load on device hardware and system resources, multitasking between applications, battery drain, resource demand on backend servers and systems and wireless carrier connection speeds and data management restrictions.

LOCALIZATION: Language, carrier performance and restrictions, and regional government requirements.

USABILITY: UI for workflow and business processes and utilization of device sensors and features for automation and efficiency.



MOBILE SECURITY

The consumerization of IT has brought forth an increasing demand of bring-your-own-device (BYOD) in the workplace, which can disrupt traditional asset management. If that wasn't enough, mobile devices share similar security concerns as desktop and laptop computers but are more susceptible to being lost or stolen due to their size. Enterprises should adequately address the security concerns of implementing mobile applications from both an organizational and device architecture point-of-view. This includes applying all standard company security policies and IT maintenance practices with a strong emphasis on; restricting specific information based on job duties or company roles, use of VPN tunnels, remote "lock & wipe", encryption of device and its data in all three states (rest, use, and transit), and the use of complex passwords.

Conceivably, the greatest threat of mobile computing for organizations will result in the theft of decision making data, reports and transactions. This threat is not limited to the physical theft of the device, but extends to remote access and interception of data over the air. Enterprises need to be concerned with information security and access control when delivering mobile applications to their workforce. Cryptographic protocols can be used to reduce unauthorized access and help secure data transmissions even if captured. With the use of MDM software, organizations can significantly control nearly every aspect of their mobile deployment and ensure security standards and policies are followed.

MDM gives IT administrators the ability to proactively and systematically manage all mobile devices within the organization regardless of manufacture, carrier, or operating system. Everything from applications and services to device features and data, can be controlled and protected from unauthorized use and disclosure. MDM software reduces mobile deployment operating costs and increases your mobile deployment ROI by optimizing mobile management and productivity. Scalable Systems can implement the right MDM solution that will secure and protect your enterprises' mobile processes, applications and data.

MDM SOFTWARE CAPABILITIES

- | | |
|--|---|
| • Remote Application Installation | • Remote Lock and Wipe |
| • Diagnostics, Logging and Reporting | • Policy Enforcement |
| • Remote Configuration, Administration and Provisioning | • Mobile Asset Tracking and Auditing |
| • Backup and Restore Data, Settings and Applications | • Troubleshooting and Diagnostic Tools |

About Scalable Systems:.

Scalable Systems is a global software consulting, development and IT outsourcing company providing both onshore and offshore software solutions and integration services to business enterprises around the globe. Scalable Systems has proven expertise in encompassing low cost, but high quality and reliable software solutions and services in areas like Data Management, Business Intelligence, Content Management and Application Development.